

**LYRIC  
STAGE** **BOSTON**

**APRIL 4 - 27**

LyricStage.com | 617.585.5678

Follow us!   

Love is kind even  
when it's hard.



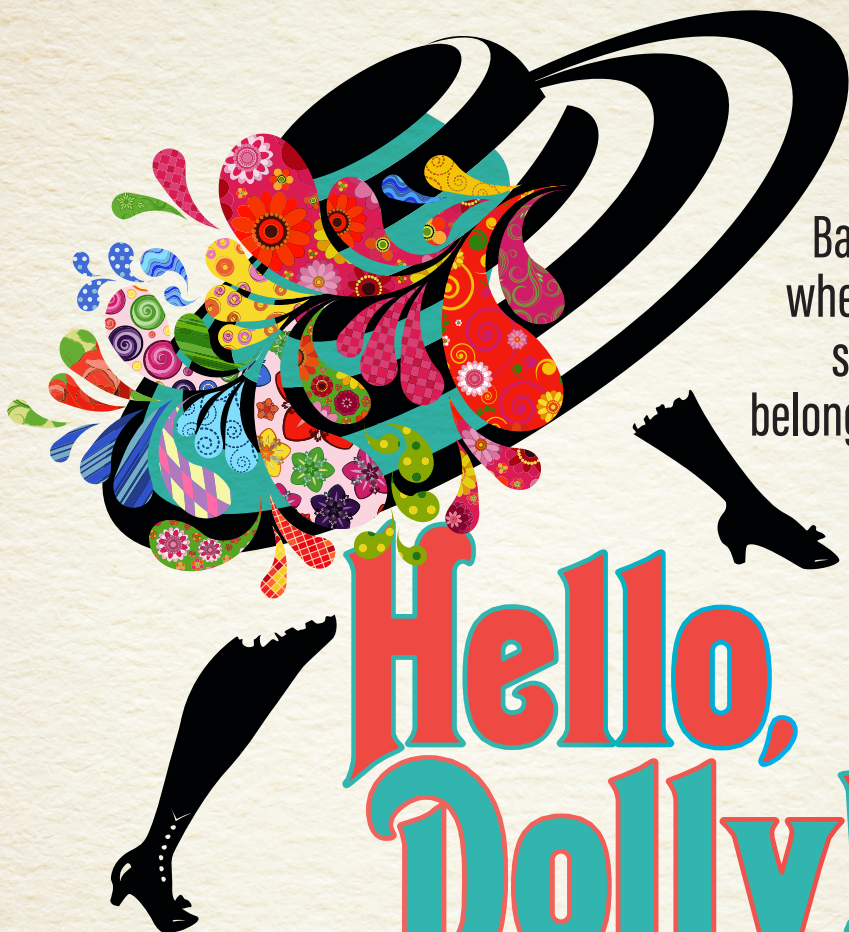
# ?The? ?Great? Reveal?

BY  
DAVID VALDES

DIRECTORS  
BRIDGET KATHLEEN O'LEARY  
& CHARLOTTE SNOW

**LYRIC**  
**STAGE** BOSTON

MAY 16  
- JUN 22



Back  
where  
she  
belongs.

# Hello, Dolly!

MUSIC & LYRICS BY  
**JERRY HERMAN**

BOOK BY  
**MICHAEL STEWART**

DIRECTOR  
**MAURICE EMMANUEL PARENT**

MUSIC DIRECTOR  
**DAN RODRIGUEZ**

CHOREOGRAPHER  
**ILYSE ROBBINS**

LyricStage.com | 617.585.5678

Follow us!      

2024/25 SEASON SPONSORS:  
Paul Kastner  
G. Lee & Diana Humphrey

CORPORATE SPONSOR:

**BrooklineBank**

 Mass  
Cultural  
Council

 BCC  
BOSTON  
CULTURAL  
COUNCIL

# The Lyric Stage Company of Boston

Courtney O'Connor Producing Artistic Director

presents

# ?The? ?Great? Reveal

BY

DAVID VALDES

DIRECTORS

BRIDGET KATHLEEN O'LEARY  
AND CHARLOTTE SNOW

Scenic Design, **Baron E. Pugh\*\***

Costume Design, **E. Rosser**

Lighting Design, **Christopher Brusberg\*\***

Sound Designer, **Kai Bohlman**

Props Artisan, **Emily Allinson**

Production Stage Manager, **Polly Feliciano\***

Assistant Stage Manager, **Charlie Berry**

FEATURING

**Paige Clark\***

**Arthur Gomez\***

**Jupiter Lê\***

**Antonia Turilli\***

Lyric Stage's 2024/25 Season Sponsors:

**Paul Kastner and G. Lee & Diana Humphrey**

Production Sponsors:

**Joseph Richard & René Morrissette**

*This commission was made possible through the generosity of G. Lee and Diana Humphrey.*

The video and/or audio recording of this performance by any means whatsoever is strictly prohibited.

The Lyric Stage Company of Boston operates under the NEAT Agreement with Actors' Equity Association and is a member of NEAT (The Producers' Association of New England Area Theaters).

The Lyric Stage Company of Boston is supported in part by a grant from The Massachusetts Cultural Council, a state agency, and The Boston Cultural Council, a local agency which is funded by The Massachusetts Cultural Council, administered by the Mayor's Office of Arts, Tourism, and Special Events.

\*Member of Actors' Equity Association (AEA) | \*\* Member of United Scenic Artists, Local USA 829



## FROM THE PRODUCING ARTISTIC DIRECTOR



Dear friends,

In early 2022, Matt Chapuran and I were looking for ways to celebrate Lyric Stage's upcoming 50th birthday. At the same time, we were discussing the many ways we worked with various Boston artists, and we kept returning to one area we wished to improve — our work with playwrights. Like that fateful day when someone dipped their chocolate bar in a tub of peanut butter, one day we put the two together, and concocted a plan to commission a play.

Of course, this being our first time doing this process, it took much longer than we expected (Happy 51st Birthday, Lyric Stage!) and we made many mistakes along the way. But there were absolutely two things we did right.

Firstly, I sat down with playwright David Valdes. During the height of the pandemic, we had commissioned Dave to kick off our Walking Plays project with a 10-minute piece. His piece beautifully set that project on its course, and we knew his was the voice we wanted to hear more from. Throughout this long process, Dave has been a kind and generous partner, and I am so grateful to him not just for his powerful words and this play, but for his fortitude, his patience, and frankly, his being a wonderful teacher — even when he shouldn't have needed to be.

Secondly, as our plans began to firm up, I was talking to Board of Directors member G. Lee Humphrey, and told him about the commission we were hoping to do. Ever generous, ever an unfailing supporter of the arts and Lyric Stage, Lee immediately offered for he and his wife, Diana, to support the commission. A few weeks ago, I had the privilege of attending both Lee's memorial and the first rehearsal for *The Great Reveal* on the same day: two wonderful events, both of which spoke to and honored this extraordinary man, and the extraordinary good he did. Thank you, Lee — for everything.

And now that we've started working more closely with playwrights, we don't want to stop! Through our Back Stage educational program, we have continued to commission playwrights to create new works that we have shared with middle and high school students for the past three years. We look forward to commissioning two new writers for Back Stage, and even though many of you are not in middle or high school anymore, we are working on plans to share them with you next season. Inside, you'll see our 2025/26 season lineup — we can't wait to see you here!

A handwritten signature in black ink that reads "Courtney O'Connor". The signature is fluid and cursive, with a large initial 'C'.

Courtney O'Connor, Producing Artistic Director

CAST

Paige Clark*	.....	Lexi
Arthur Gomez*	.....	Christopher
Jupiter Lê*	.....	Linus
Antonia Turilli*	.....	Dosia

*\*Denotes member of Actors' Equity Association*

**CONTENT WARNING:**  
Adult Language.

The performance will run roughly 90 minutes  
with no intermission.



**GET THE LATEST SCOOP**  
& all the inside info by  
joining our email list!  
**Sign up today!**

Michael Kaye\* and Remo Airaldi\* in *ART* (2025)

MARK S. HOWARD

## FROM THE DIRECTORS OF *THE GREAT REVEAL*



David Valdes, Bridget Kathleen O'Leary, and Charlotte Snow

I am so happy to be directing at Lyric Stage Boston. I have always appreciated their dedication to local artists. Adding a local playwright to mix, seems like the next logical step in making that commitment. David offers us a story that packs a punch, but not without humor.

We live in a political climate where, as Dosia says “Loving purely” isn’t possible. Separating the personal from the political is a privileged place to be. Those

of us who exist in marginalized communities don’t have that luxury. Until recently I think most of us felt validated just by being “loved,” even if we were never going to be accepted. Today, I believe that you can’t actually love somebody if you are also willing to actively legislate against them or participate in events that promote the erasure of who they are.

Lyric Stage never shies away from a difficult conversation. For the past 15 years I have sat where you are sitting. I have been to many different places with characters I have loved, and characters that have challenged me. Lyric Stage invites us all into these complicated worlds. Even better, they give us the space to laugh at the best and the worst of us. I believe there is a lot of learning in the laughter. I invite you to lean into this story and all of its uncomfortable and joyous moments. I am excited to be sitting back in the audience with you.

Bridget Kathleen O’Leary, Director



I remember reading this script for the first time... and being absolutely terrified. So much of this story is about upholding loved ones to the best versions of themselves. As a chronic people-pleaser, David Valdes’ words felt like a dare.

Too many plays depict characters from marginalized communities as exceedingly subservient to their own unfounded gratefulness at being included. The two trans characters in *The Great Reveal* both crave inclusion, yet are fully aware of the price tag on their dignity when they’re asked to participate in a gender reveal party, a trend which chops up gender-identity to the birth-assigned pink and blue binary.

What I deeply appreciate is that, in their quest to be properly respected, these characters are still allowed to be messy. They go behind each other’s backs, jab at their family, jest with each other, and there’s a cost when they cater to the arbitrary temperaments of their cis counterparts. This play is a hilarious comedy and one that thankfully never lets its LGBTQ+ characters play the straight man.

I hope this play makes you laugh... and cry... and not just from the laughter. To those seeking support, believe in your chosen family enough to remind them of their best selves. To those who can give support, and you know who you are, don’t be reminded too many times.

Charlotte Snow, Director



**Paige Clark\* (Lexi)** – Lyric Stage: Debut. Actors' Shakespeare Project: *Taming of the Shrew* (Lucentio), *Macbeth* (Lady Macbeth), *Comedy of Errors* (Emilia), *Two Gentlemen of Verona* (Julia). Greater Boston Stage Company/Front Porch Arts Collective: *Three Musketeers* (Aramis). SpeakEasy Stage Company: *Allegiance* (Mrs. Tanaka). Newton Theatre Company: *We're Gonna Die* (Singer), *The Guys* (Joan). Film: *A Capsule for Robin*. Paige holds a BFA from Boston University and is currently pursuing her MS from Northeastern. She is the winner of Best Ensemble Awards from both the First Contact Film Festival and the IRNE Awards. In addition to teaching and directing theatre at Newton South High School, Paige also sings in her rock band, Poor Yorick. | [pooryorickboston.com](http://pooryorickboston.com)



**Arthur Gomez\* (Christopher)** – Lyric Stage: *Assassins* (Bystander), *Kiss of the Spiderwoman* (Prisoner). Gloucester Stage Company: *The Hombres* (Hector), *Every Christmas Story Ever Told (And Then Some!)* (Jim). Greater Boston Stage Company: *Guys and Dolls* (Nathan Detroit), *Miracle on 34<sup>th</sup> Street* (Mr. Macy), *Last Night at Bow-Mor Lanes* (Ed), *The Three Musketeers* (Monsieur Bonacieux). Boston Playwright's Theatre: *Lost Tempo* (John' Sporty' Dale). Moonbox Productions: *Shipwrecked* (Ensemble), *Twelfth Night* (Feste), *Amadeus* (Orsini-Rosenberg) Directing Credits: Greater Boston Stage Company: *All Is Calm*. Reagle Music Theatre: *All Shook Up*. Moonbox Productions: *House of Ramon Iglesias*, *Passing Strange*. My undying love and dedication to Samantha and Quinn. I am forever grateful to have you.



**Jupiter Lê\* (Linus)** – Lyric Stage: *Yellow Face* (NWOAOC & others). Company One: *The Interrobangers* (Hoover). CHUANG Stage: *Skinless* (Ash). Moonbox Productions: *Swan* (Richard). East West Players: *Interstate* (Dash). Fresh Ink Theatre Company: *Shrike* (Micah). Northeastern University: *Everybody* (Death), *She Kills Monsters* (Miles). BA Northeastern University. Jupiter has worked with The Sóng Collective, HowlRound Theatre Commons, NAATCO & Long Wharf Theatre, The Huntington, SpeakEasy Stage Company, and Asian American Playwright Collective (AAPC). He is a queer transmasculine Vietnamese-American theatre-maker, a child of immigrants born, raised, and based on the lands of the Massachusetts people known as Boston, MA. For liberation. | [@jupiter.le](http://@jupiter.le) | [jupiterle.com](http://jupiterle.com)



**Antonia Turilli\* (Dosia)** – Lyric Stage: Debut. Greater Boston Stage Company: *Tiny Tim's "A Christmas Carol"* (Charlotte). Alight Theatre Guild: *The Elm Tree* (Mabry). The Boston Conservatory: *The Curious Incident of the Dog in the Nighttime* (Mrs. Alexander).

Toni can be seen in the Nickelodeon feature film *Good Burger 2*, as well as the short film *Reflection, Reflection* by Aluminum Distortions. She is a recent graduate of The Boston Conservatory at Berklee where she earned her BFA in Contemporary Theater. Toni is also a member of the final class of the LINK Program in their Film/TV track. | [@toniturilli](http://@toniturilli) | [antoniaturilli.com](http://antoniaturilli.com)

**David Valdes (Playwright)** – Lyric Stage: *The Walking Plays, Made You Look*. Moonbox Productions, Borderlands Theater, Milagro, Mixed Blood Theater Company, and University of California at Riverside: *Mermaid Hour*. Company One: *Downtown Crossing*. Fresh Ink: *The Last Catastrophist*. Boulder Ensemble Theater Company: *Full Code*. His published plays include *Brave Navigator* and *The Mermaid Hour*. A past fellow with the The Huntington, Company One, Ensemble Studio Theater, Cimientos, and Boston Foundation, his plays have appeared in the National New Play Showcase, Orlando Shakes, Portland Stage Little Festival of the Unexpected, and others. He is the author of the young adult novels *Spin Me Right Round*, *Brighter than the Moon*, and *Finding My Elf*. | [davidvaldeswrites.com](http://davidvaldeswrites.com)

**Bridget Kathleen O'Leary (Co-Director)** – Lyric Stage: Debut. Bridget is a freelance director, dramaturg and theater educator. Since 2022 she has served as the Director of New Play Development for Moonbox Productions. In the Boston area Bridget has directed for Moonbox Productions, New Repertory Theatre, Boston Playwrights' Theatre, Actors' Shakespeare Project, Gloucester Stage Company, Central Square Theatre, Whistler in the Dark and SpeakEasy Stage Company. Select world premiere directing credits include *Heartland*, *Ripe Frenzy* (IRNE Award winner for Best New Play), *Blackberry Winter* (Elliot Norton Nomination, Best New Play), and *Pattern of Life* (IRNE Award winner for Best New Play). From 2008-2018 Bridget served as the Associate Artistic Director at New Repertory Theatre. She received her MFA in Directing from Boston University. Special thanks to Jo and Alice for all of the magic, love, and support.

**Charlotte Snow (Co-Director)** – Lyric Stage: Debut. Assistant Director: Actors' Shakespeare Project: *Hamlet* (High School Youth Intensive). Moonbox Productions: *The Mermaid Hour*. Actor: Deadword Theatre Company: *The Seagull* (Konstantin), *After Magritte* (Mother). *What If?* Queer Creator Collaborative: *O'Possum* (Cactus), *Magic Girl!...* *And Her Demons* (Nox). Boston Playwright's Theatre: *Eat Your Young* (Jelly). She will be returning to her alma mater, Boston Conservatory at Berklee, to direct a staged reading of *Problem Like Maria* before directing Moonbox Productions' ten-minute play in the Boston Theatre Marathon. Charlotte would like to thank her found family, friends, mentors, and therapist for their uplifting love and support.

**Baron E. Pugh\*\* (Scenic Designer)** – Lyric Stage: Lighting Designer: *Yellow Face, Assassins*. Scenic Designer: *Assassins, The Great Leap, The Light, Breath & Imagination, The Wiz*. Off-Broadway: Out of the Box Theatrics in association with Ice Berg Productions: *As Time Goes By*. The Public Theater: *shadow/land* (associate designer). NYC: The Juilliard School, Drama Division: *King Lear, The Tempest*. Regional: Capital Rep: *Three Mothers*. Berkshire Theatre Group: *Million Dollar Quartet, B.R.O.K.E.N code B.I.R.D switching*. Barrington Stage: *ABCD*. Hartford Stage: *Trouble in Mind*. The Huntington: Associate Designer: *The Grove, Sojourners, K-I-S-S-I-N-G, The Bluest Eye*. Trinity Rep: *Tiny Beautiful Things, Radio Golf*. TheatreSquared: *Detroit '67, The Elaborate Entrance of Chad Deity, School Girls*. Baron is a Boston-based scenic designer for theater, opera, and other live performance arts.

**E. Rosser (Costume Design)** – Lyric Stage: Debut. Moonbox Productions: *Dirty Rotten Scoundrels, Mermaid Hour, Manic Monologues, The Good Deli, Jonathan, Barefoot in the Park*. Greater Boston Stage Company: *Hadestown: Teen Edition, Beauty and the Beast, SIX: Teen Edition, Once Upon a Mattress, James and the Giant Peach, The Play That Goes Wrong*. Company One: *The Interrobangers*. Hub Theatre: *46*

*Plays for America's First Ladies* (Costume/Puppet Design). A freelance costumer, puppet enthusiast, and all-around sucker for immersive theater, Rosser is thrilled to make her Lyric debut with another David Valdes piece. Thanks again to Bridget and Charlotte for having her along for the ride. | [erosser.com](mailto:erosser.com)

**Christopher Brusberg\*\* (Lighting Designer)** – Lyric Stage: *Sister Act, The Book of Will, Buyer and Cellar, Red Hot Patriot*. EMERGE125 Resident Lighting Designer; Arrow Rock Lyceum: *42nd Street, The Addams Family, Moriarty, Clue!, A Christmas Carol*. Company One: *Morning, Noon, and Night, The Boy Who Kissed the Sky, can I touch it?, An Octoroon*. Chery Arts Space: *As You Like It, And What Happens If I Don't, The Shoe*. New Repertory Theatre: *Heartland, Scenes From An Adultery*. Annapolis Opera: *Trouble in Tahiti, The Magic Flute, The Marriage of Figaro*. Tri-Cities Opera: *Rigoletto, The Barber of Seville, The Marriage of Figaro*; Opera Lafayette: *Leandre et Hero, Io, Les Fetes de Thalie*. Christopher has an MFA from the University of Maryland and is a proud member of USA829. | [@ctblighting](mailto:@ctblighting) | [ctblighting.com](http://ctblighting.com)

**Kai Bohlman (Sound Design & Composition)** – Lyric Stage: *The Book of Will* (Assistant Sound Designer). Moonbox Productions: *The Mermaid Hour, The Manic Monologues*. Central Square Theater: *Angels in America Part 1: Millennium*

Moonbox Productions presents

# CROWNS

"A powerful mix of gospel music and 'hattitude'"

By Regina Taylor  
Adapted from the book by Michael Cunningham and Craig Marberry  
Directed by Regine Vital / Associate Directed by Davron Monroe  
Music Directed by David Coleman

**April 11 - May 4**  
at Arrow Street Arts / 2 Arrow Street, Cambridge

**tix at ArrowStarts.org**

Contre-TEMPS  
A musical based on the life of FRANÇOIS COURDOT

MAY 9-11, 2025

THE MASO STUDIO AT HUNTINGTON THEATRE  
Performed in French with English captions

Tickets from \$20

FRENCH THEATER PROJECT

[www.FrenchTheaterProject.com](http://www.FrenchTheaterProject.com)





*Approaches* and *Part 2: Perestroika* (Co-produced with Bedlam/Elliott Norton-nominated), CHUANG Stage: *The Chinese Lady* (Elliott Norton-nominated). Boston-based, Queer, audio-baddie Kai is just a human with an affinity for sound and sound-adjacent things and is bustling all around the Greater Boston area with their sound-shenaniganry.

**Emily Allinson (Props Artisan)** – Lyric Stage: *Noises Off*. Merrimack Repertory Theatre: *A Christmas Carol*, *The Porch on Windy Hill*, *The Search for Signs of Intelligent Life in the Universe*, *Frankenstein*, *Lady Day at Emerson's Bar and Grill*. Peterborough Players: *Noises Off*, *Deathtrap*, *Man of La Mancha*, and all other productions since 2018. Greater Boston Stage Company: *Clue*, *Dial M for Murder*, *Guys and Dolls*. Emily has been working as a Props Supervisor/Designer and Theatre Technician in New England since 2017.

**Polly Feliciano\* (Production Stage Manager)** – Lyric Stage: *Yellow Face* (Production Stage Manager), *Trouble in Mind* (Production Stage Manager), *Sister Act* (Assistant Stage Manager). Trinity Repertory Company: *The Prince of Providence*, *A Christmas Carol* (2019), *Radio Golf*, *A Christmas Carol* (2021), *Gem of the Ocean* (Production Assistant), *Fairview*, *The Inheritance Parts 1 & 2*, *Fences*, *A Christmas Carol* (2024) (Assistant Stage Manager), *Becky Nurse of Salem*, *POTUS*, *Someone Will Remember Us* (Production Stage Manager). Polly is from Providence, Rhode Island and graduated from Rhode Island College with a BA in Theater. She had the privilege of being the Production Manager at Mixed Magic Theater in Pawtucket, RI from July 2020 until August 2021. Polly does it all for Bucky, Bernie, Gus, and Emmy. And also, Hayley. | @bollyrocket24

**Charlie Berry (Assistant Stage Manager)** – Lyric Stage: *Party Bots*, *Made You Look* (Lyric Backstage), *Ken Ludwig's The Game's Afoot*, *Sister Act*, *The Light*. Suffolk University: *She Kills Monsters*. American Repertory Theatre: *Diary of a Tap Dancer*. SpeakEasy Stage Company: *Pru Payne*. Commonwealth

Shakespeare Company: *The Winter's Tale*, *Macbeth*. North End Music & Performing Arts Center: *Orfeo ed Euridice*, *Le Nozze di Figaro*. Company One: *Morning, Noon, and Night*. MassOpera: *Caravana de mujeres*. The Huntington: *The Band's Visit*, *Prayer for the French Republic*. Education: BFA Stage & Production Management, Emerson College. Charlie is a freelance stage manager and technician. Special thanks to their friends' cats that decorate their black clothing with fur for every show!

**Courtney O'Connor (Producing Artistic Director)** – Courtney joined the full-time staff of the Lyric Stage in 2018 and was named Artistic Director in 2020. She has directed several pieces for the Lyric Stage, including *Be Here Now*, *The Book of Will*, *Preludes*, *Rooted*, *Assassins*, *Thirst*, *Urinetown: The Musical*, and *ART*. Courtney was a senior affiliated faculty member in Performing Arts at Emerson College for more than 20 years. In addition to directing for theatres and universities, Courtney has directed multiple site-specific productions at locations including the Senate Chamber of the Massachusetts State House, Mount Auburn Cemetery, and Boston's Old State House (all with Plays in Place). Through her work with the Coyote Theatre Project, she oversaw the creation of more than 200 new 10-minute plays written by youths from Boston. Courtney received the Elliott Norton Award for *Assassins* and *The Life and Adventures of Nicholas Nickleby* and the Alan L. Stanzler Award for Excellence in Teaching.

**\*Actors' Equity Association (AEA)** founded in 1913, represents more than 51,000 professional Actors and Stage Managers nationwide. Equity seeks to foster the art of live theatre as an essential component of society and advances the careers of its members by negotiating wages, improving working conditions and providing a wide range of benefits, including health and pension plans. Actors' Equity is a member of the AFL-CIO and is affiliated with FIA, an international organization of performing arts unions. | actorsequity.org

## LYRIC STAGE BOARD OF DIRECTORS

Ron Sudol, President  
Tim Holiner, Vice President  
Patricia Aronson, Treasurer  
Sharon Parisi, Clerk

Nina Berk  
Jazzmin G. Bonner  
Sasha Castroverde  
Richard Daynard  
Amanda Eckhoff  
Glenda Fishman

David Miller  
Stuart Rose  
Elyse Schuerman  
Daniel Sternberg  
Janetta Stringfellow  
Susan Wilchins

## LYRIC STAGE ADVISORY COUNCIL

Barry P. Chaiken, MD  
Carmen Chan  
Christopher Cook  
Wendy Guttererson  
Martha Hayward  
Jo-An Heileman  
Michelle Landers  
Laura Conrad Mandel

Jo Frances Meyer  
Baron Pugh  
Shwetha Ravi  
Joe Richard  
Dick Rousseau  
Janet Spitz  
Emily Stidsen  
Ruth Whitney

**\*\*United Scenic Artists (USA-Local 829)** is a labor union and professional association of Designers, Artists, Craftspeople, and Department Coordinators, organized to protect craft standards, working conditions and wages for the entertainment and decorative arts industries. The members work in film, theatre, opera, ballet, television, industrial shows, commercials, and exhibitions. The current active membership totals over 5,000. | [usa829.org](http://usa829.org)

#### ADDITIONAL PRODUCTION STAFF

**Sean Doyle**, Audio Supervisor  
**Shira Helena Gitlin**, Intimacy Choreographer  
**Gabriel Goldman**, Head Electrician  
**Rachael Harned**, Assistant Lighting Designer  
**Greg Maraio**, Fight Choreography  
**Keira O'Connor, Kathleen Shanahan**,  
 Wardrobe Supervisors  
**Andrew Robinson**, Assistant Scenic Designer

#### A SPECIAL THANKS FROM PLAYWRIGHT DAVID VALDES:

Thanks to **Jo Michael Rezes, Connor Wentworth, and Jalen Bunch**, for their insight into the earliest drafts of the play, which helped steer the text toward what it would become.

**SPECIAL THANKS:** Moonbox Productions

APR 25-  
MAY 18

A heartwarming musical that lifts up the beauty in second chances & the transformative nature of friendship.

# THE SPITFIRE GRILL

Book & Music by  
**JAMES VALCO**

Lyrics & Book by  
**FRED ALLEY**

Based on the film by  
**LEE DAVID ZLOTOFF**

Directed by  
**ILYSE ROBBINS**



THE UMBRELLA  
STAGE COMPANY

[TheUmbrellaArts.org](http://TheUmbrellaArts.org)  
40 Stow Street, Concord

## qt library

*The QT Library is a volunteer-led collective of artists, educators, librarians, and LGBTQIA+ folks of all backgrounds working towards establishing a brick-and-mortar queer & trans lending library and accessible, intersectional, and substance-free community space in Boston.*



### our mission

THE QT LIBRARY NURTURES THE CURIOSITY AND MAGIC OF THE QUEER AND TRANS COMMUNITY THROUGH CENTRALIZED RESOURCES AND CURATED PROGRAMS HELD IN AN AFFIRMING SPACE.

#### HELP US BUILD THE QT LIBRARY:

- ✦ donate to QT
- ✦ donate your books
- ✦ buy us a book
- ✦ spread the word



TAY IN TOUCH! STAY IN TOUCH! STAY IN TOUCH! STAY IN TOUCH! STAY IN TOUCH! STAY IN TOUCH!



[qtlibrary.org](http://qtlibrary.org)

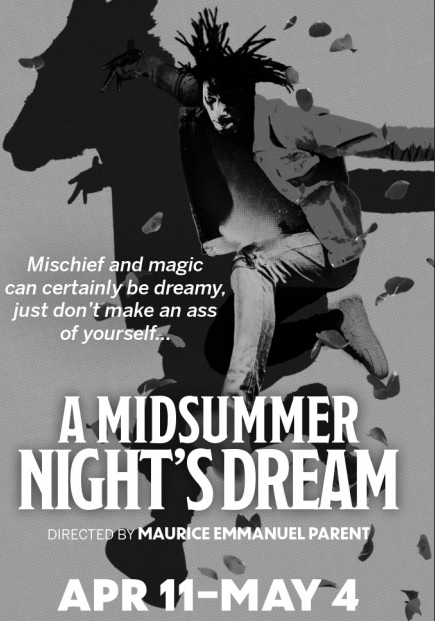


[hello@qtlibrary.org](mailto:hello@qtlibrary.org)



[@qtl.library](https://www.instagram.com/qtlibrary)

actors'  
shakespeare  
project



Mischief and magic  
can certainly be dreamy,  
just don't make an ass  
of yourself...

# A MIDSUMMER NIGHT'S DREAM

DIRECTED BY MAURICE EMMANUEL PARENT

APR 11-MAY 4

MARCH 28 - APRIL 19



# THE PLAY THAT GOES WRONG

Welcome to opening night of  
"The Murder at Haversham Manor," where  
everything that can go wrong does. From  
an unconscious leading lady and a corpse  
that can't stay dead to actors tripping over  
everything (including their lines), this  
uproarious disaster will have you in stitches.

TICKETS \$25 - \$69

781-279-2200 | greaterbostonstage.org  
395 Main St, Stoneham, MA



STIRRING FAMILY DRAMA



# WHAT YOU ARE NOW

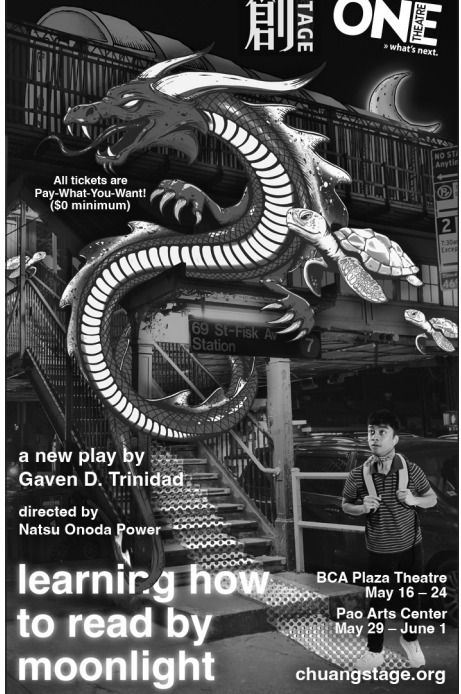
BY SAM CHANSE DIRECTED BY STEVE COSSON

APRIL 23-MAY 11

Funding Provided by Greater Lowell Community Foundation,  
Mass Humanities, National Endowment for the Arts,  
and the Alfred P. Sloan Foundation

MERRIMACK REPERTORY THEATRE  
MRT WWW.MRT.ORG | 978.654.4678

CHUANG  
STAGE  
COMPANY  
ONE  
What's Next.



All tickets are  
Pay-What-You-Want!  
(\$0 minimum)

a new play by  
Gaven D. Trinidad

directed by  
Natsu Onoda Power

learning how  
to read by  
moonlight

BCA Plaza Theatre  
May 16 - 24  
Pao Arts Center  
May 29 - June 1

chuangstage.org

# ARTIST SPOTLIGHT PLAYWRIGHT DAVID VALDES, *THE GREAT REVEAL*

David Valdes at the first rehearsal of *The Great Reveal*.

KANDICE WHITTINGHAM



“*The Great Reveal* grew out of real-life discussions among my trans and queer friends during the 2020 election, as we debated how — or whether — to show up for people we love but who don’t always take us very seriously. I knew I wanted to write a comedy that would invite people to consider how loaded family gatherings can be, no matter who you are, and also how political division only ramps that up. The play is not a lesson, or a tract, but a wry look at the ways we try (and sometimes fail) to love each other through tough times.

The first professional play I ever saw was *And a Nightingale Sang* in Boston at Lyric Stage. It was the 1986/87 season and I was a 19-year-old college sophomore. I came back again and saw *A Streetcar Named Desire* and *Quartermaine’s Terms*. To be here now, in this moment premiering a play I am so very proud of is indeed a full-circle moment.”

– David Valdes, March 2025





## Cast Spells

### Theatre is Magic

*A change in light.  
The shift of a chair.  
The opening of a trap door.  
A change of shoes.  
The moan of a fog horn.*

Each of these seemingly minor changes can instantly propel a story in exciting, provocative, and uncertain new directions. That's the power of stagecraft.

So, too, can small gifts make big changes in the stories we tell and how we continue to charm, delight, and challenge.

As we reveal our new season, we invite audiences and friends to make magic with us

**Please cast a spell with a gift of \$25, \$50 or \$100 today.**



**YES, I Want to  
Make Magic at  
Lyric Stage!  
Scan to Give.**

Madison Margaret Clark  
in *Crumbs from the Table  
of Joy* (2024).

## LYRIC STAGE BOSTON 2025/26

# Live in the moment. Let in the joy.



### Every story a love letter to the human spirit.

Many years ago, my mentor (the late Maureen Shea) was chatting with me about a play she was directing, and she said something that tickled me: “It’s a love letter, Courtney, a little valentine.” As I was looking at our titles for the 2025/26 season, I realized that in fact, all of them are love letters.

And don’t we all need a little more love right now? Whether it’s reflecting back on what our community can mean to us and on our changing roles within it, revealing our deepest love (and fears) for ourselves or for those we hold dearest, meeting our favorite legendary literary giants in new and surprising ways, or simply revelling with people who decided to find a whole new way to express their stories, each of these titles keeps love at the center of its storytelling. Together, we’ll travel to Victorian and Elizabethan England (with a nod towards Denmark), to ancient Ithaca and modern Atlanta, and into the heart of our New England community — all connected by love, longing, homecomings, and discoveries of who and what we really are.

And let’s not forget laughter. Along with warming our hearts, each of these shows will tickle our souls with humor, delight, and joy (and maybe some eggs).

In truth, each opportunity we have to gather together and share a performance is a love letter. And I look forward to penning these with you.

A handwritten signature in black ink that reads "Courtney O'Connor". The script is fluid and cursive.

Courtney O’Connor, Producing Artistic Director



By Thornton Wilder  
Directed by Courtney O’Connor

**SEP 19 - OCT 19, 2025** | The day starts and ends pretty much the same way in Grover’s Corner. Beyond the humdrum of daily life, glimmers of joy, flickers of melancholy, and secret desires are hidden away in the mundane. It’s in the eyes of young lovers, the silence of a lonely townie’s room, and the hearts of the wild and restless. Stars shine over this sleepy New England town, but are dimmed when compared with the wonderment tucked away within the seemingly ordinary moments of this place so many call “home.” Even in the smallest of moments, beauty is there. The secret is to stop and take notice.

# A SHERLOCK CAROL

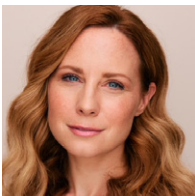
By Mark Shanahan  
Directed by Ilyse Robbins

**NOV 14 - DEC 21, 2025** | Moriarity is as dead as a doornail. Sherlock Holmes is depressed. Without his number one adversary, what's the point of it all? Enter a grown-up Tiny Tim and the mysterious death of everyone's favorite humbug and it's a festive literary mash-up with surprises around every corner. This fresh and charming reimagining of two of the most beloved literary characters is a Dickens of a yuletide detective story that's as "good as gold." Six actors transform before your eyes in a playful, clever, and joyous holiday comedy that is "elementary" for a festive outing sure to delight audiences of all ages.



Music, Book, & Lyrics  
by Alex Bechtel  
Book by Grace McLean  
Book by Eva Steinmetz  
Directed by Courtney O'Connor  
Music Direction by Dan Rodriguez

**FEB 6 - MAR 1, 2026** | A generous glass of bourbon, a five-piece band, and ninety minutes is all Penelope needs to tell her side of the story as she embraces her heartache, loneliness, and resolve during the wait for her husband Odysseus to return from a seemingly endless war. Her son has disappeared. Relentless suitors prance before her. Days drone on as she is left to wonder who she is if she is alone. From jazz to folk to indie rock, Penelope dishes the dirt in a captivating cacophony of emotions that redefines what we might know of her through a modern lens. Erica Spyres (*Into the Woods*, *Avenue Q*) triumphantly returns to Lyric Stage in a tour-de-force performance of crystalline beauty and enlightenment.



"I haven't been this excited about a project in a long time and a huge part of that excitement comes from knowing the environment that Lyric Stage and Boston provides. A place where artists feel supported allows for the imagination and sense of play necessary to transport themselves and an audience into another world. I feel incredibly fortunate and inspired to work on this piece with

Courtney. She has been there from the beginning for me, co-directing *The Life and Adventures of Nicholas Nickleby*, my first play in Boston. We are looking forward to bringing this challenging and beautiful piece to life!"

– Erica Spyres

# Angry, Raucous, and *Shamelessly* GORGEOUS

By Pearl Cleage  
Directed by Jacqui Parker

MAR 20 - APR 12, 2026 | In the 1990s, actress Anna Campbell sparked a firestorm with a staging of August Wilson monologues performed entirely in the nude. Decades later, her provocative performance that changed the trajectory of her career — rises like a ghost — when it is to be included at a woman's theater festival. But there's a catch. A much younger and inexperienced actress whose credits are less than desirable has been asked to perform, causing Anna to spiral in a whirlwind of insecurity and hesitancy. With support from her manager and long-time friend Betty, Anna grapples with the choice to step aside on a road she helped to pave so that a new generation can continue the journey.

# SOMETHING *ROTTEN!*

Music & Lyrics by Wayne Kirkpatrick  
& Karey Kirkpatrick  
Book by Karey Kirkpatrick  
& John O'Farrell  
Directed by Ilana Ransom Toepflitz

MAY 1 - JUN 7, 2026 | Two brothers stuck in the shadow of a certain Renaissance rock star (Shakespeare), set forth to knock him off his perch by writing the world's very first musical. A misinformed soothsayer plants the seeds for this brilliant idea as the task of how to upstage a literary genius without really trying hilariously unfolds. This history-twisting mash-up of sixteenth-century Shakespeare and twenty-first-century Broadway is a love letter to musical theater, and all the winks and flourishes that make us feel that "with a musical we might have half a chance."

## Subscriber Benefits include:

- 5-Show subscribers get the first choice of seats.
- 3 & 4 show subscribers get first choice of seats before single tickets go on sale.
- Savings up to 15%-20% off single ticket prices depending on package you choose.
- Exchange your tickets for *absolutely no exchange fee*.

Plus many more!

**Subscribe Today — stop by the office while you are here for the show!**  
Or visit [LyricStage.com](http://LyricStage.com) | 617.585.5678





Lyric Stage promotes inclusivity & connection in an effort to integrate live theatre into the lives of all residents of Greater Boston.

**Affordable Price Options include:**

- \$30 Under 35
- \$25 Side Section Seats
- \$10 Student Tickets
- Senior Discount
- Huntington Community Membership Initiative
- MA Teachers Association
- Active Duty Military & Veterans
- Playwrights Welcome
- MassWIC
- Connector Care
- EBT
- Volunteer Ushers



For more information visit  
[lyricstage.com/tickets/lyric-for-all](http://lyricstage.com/tickets/lyric-for-all).



Joy Clark and the cast of *The Drowsy Chaperone*.

Generous friends like you advance our mission to produce and present live theatre in Greater Boston with an intimate approach that promotes inclusivity and connection. The Lyric Stage leads an effort to integrate live theatre and theatre education into the lives of all residents of greater Boston. We extend our sincere thanks to those who make our work possible. Together we can.

**This list has been updated to reflect gifts through MARCH 18, 2025. For questions, concerns, or details, please contact Elizabeth\_Carsley@lyricstage.com.**

#### SEASON SPONSORS

Paul Kastner  
G. Lee & Diana Humphrey

#### THE POLLY & SPIRO ARTISTIC EXCELLENCE FUND

Carmen S. Chan  
The James D. & Veronica E.  
Chesterton Family  
Foundation, *in memory*  
*of Spiro Veloudos*  
Rebecca & Skip Curtiss

Robert & Iris Fanger, *in*  
*memory of Spiro Veloudos*  
Deborah Levey &  
Crispin Weinberg  
Elaine P. Levine  
Barbara Low  
Ilyse Robbins Mohr  
Jean Rosenberg &  
Peter Southwick  
Sharon & John Parisi  
Christopher R. Yens &  
Temple Gill

Dixie & Jon Borus  
Carmen S. Chan  
Matt Chapuran & Michelle LeBlanc  
Michael Connery & Gene Marley III  
John David Corey & Miguel Rosales  
Margaret P. Davis  
Mary K. Eliot  
Elaine Epstein & Jim Krachey  
Alain & Rebecca Eudarc  
William & Susan Fink  
Glenda & Bob Fishman  
Sylvia E. Green, *in memory of*  
*Ron Ritchell*  
Garth & Lindsay Greimann  
Serena & Brent Hall

Judy Dillman  
Zach & Willis Durant-Emmons  
Robert & Iris Fanger, *in memory of*  
*Spiro Veloudos*  
Gail Flatto  
Elaine Fong & Leon Yankwich, *in*  
*honor of Janet Spitz*  
David & Karen Gaylin  
Sara S. Glidden & Paul A. Perfetti  
Grace & Bill Gregor  
Jeffrey Guenette, *in memory of*  
*Margarita Martinez*  
Tom & Nancy High  
Susan Hunziker  
Joan Kinne

#### Founder's Circle

**(\$50,000+)**  
Brookline Bank  
City of Boston  
Howard Cohen & Myra Musicant  
Massachusetts Cultural Council  
Sharon & John Parisi

Ruth Hertzman-Miller  
Joseph Richard & René Morrisette  
Jan & Stuart Rose  
Richard Rousseau  
Elyse & Don Schuerman  
Richard & Mary Scott  
Mary & Larry Shaw  
State Street Foundation  
Tiny Tiger Foundation  
Dr. Vanessa Torrice  
Trefler Foundation  
Sue & Steve Wilchins  
Richard & Sally Zeckhauser

Ruth A. Hunter  
Thomas Kelly & Victoria Fremont  
Edgar Russell Knudson &  
Louis Peter Mula, Jr.  
Will & Anastasia Lyman  
Wendy & Bob MacDonald  
Jack & Dottie MacKeen  
Sharon A. Miller  
Michele Mulvaney  
Martha C. Narten  
Stephen & Margaret Ober  
Arthur & Athena Papas  
Ruth Powell  
Jean Rosenberg & Peter Southwick  
William Sano, *in honor of*

Richard & Beth McLaughry  
John & Judith Mitchell  
Frank Neely & Ron Parmakis  
Bob & Jackie Pasucci  
Betsy Peck  
Alexandra Pollard & Jeffrey Kapell  
Joe Quinn & Diane Juliar  
Anne Radday  
Alice Richmond & David  
Rosenbloom, *in honor of Nina Berk*  
& *Courtney O'Connor*  
Kathleen & William Rousseau  
Roland W. Roy  
Richard Sacks  
Laurie Saylak, *in memory of*  
*Lee Humphrey*

#### Artistic Director's Circle

**(\$15,000-\$24,999)**  
Nina & Don Berk  
EdVestors  
Ron Sudol

#### Designer's Circle

**(\$2,500-\$4,999)**  
Anonymous  
Diane & Fred Berk, *in honor of*  
*Nina & Don Berk*  
The Bresler Family Foundation  
Andrew & Darina Chesterton  
David Crandell & Wendy Gutterson  
Robert Kuhn & Darcy Devney  
Suzanne Priebatsch  
Julie Rohwein & Jonathan Aibel  
Shell Oil Foundation  
Madelyn & Paul Sorensen  
Jean Walsh & Graham Davies  
Ruth Rotundo Whitney  
Christopher R. Yens & Temple Gill  
Michael Zody

David William Shuckra, *in memory*  
*of Clifford Wunderlich*  
David & Ann St. Germain  
Daniel Sternberg  
Barbara & Jim Stowe  
Hannah Taytslin & Michael Devine  
Mary Verhage  
Jo Wellins, *in memory of*  
*DG Wellins*  
Robert & Shirley Zimmerman  
Liz & Andy Zucker

Robert Seiler  
Ellen L. Simons  
Gayle Smalley & Judith Curby  
Bobbie Steinbach  
Marylen Sternweiler  
Jan & Chris Swain  
Robert & Leslie Turner  
Donna Wade  
Joelle & Harvey Wartosky  
Ellen Westheimer  
Jerry Wheelock & Elizabeth Wood  
Boris Zbarsky & Emma Zbarsky

#### Producer's Circle

**(\$10,000-\$14,999)**  
Judith & James Barr  
Jennifer L. Eckert  
Sam & Gretchen Shubrooks

#### Director's Circle

**(\$5,000-\$9,999)**  
Patricia Aronson  
Richard & Carol Daynard  
JoAnne Walton Dickinson &  
John E.R. Dickinson  
Marjorie & Donald Forte  
Google, Inc.  
Sarah & Eric Hanselman  
Bruce Hauben & Joyce Brinton  
Jo-An Rofe Heileman  
James G. Kamitses &  
Cynthia Bencal  
David R. Miller &

#### Actor's Circle (\$1,000-\$2,499)

Jacquelin & Robert Apsler  
Marcia Bartusiak & Steve Lowe  
Nina & Don Berk, *in honor of*  
*Courtney O'Connor*

#### Apprentice's Circle

**(\$500-\$999)**  
Anonymous  
Peter Ambler & Lindsay Miller  
Mary & John Antes  
Jeannine Ayotte  
Stacey & Mark Brandon  
Marianne Callahan  
Sasha Castroverde

#### Supporter's Circle

**(\$250-\$499)**  
Anonymous  
Miki Akimoto  
Berndt Anderson  
Michael Aylward  
Susan Britt  
Kelly Caiazzo  
Matthew Carr

- Community Music Center of  
Boston, *in honor of Lee Humphrey*
- Paula Cortes
- Jon & Kim Davis
- Joan Doucette
- Lee Emerson
- Gary & Frances Feldman
- Janet Fidelman
- Lisa & Barry Fireman
- Judith Ganz, *in memory of  
Lawrence Gray*
- Chris Gaucher & Roger Ferguson, Jr.
- Judith Gentile
- Laurie Gould
- Phillip & Barbara Graceffa
- J. William Harris &  
Terry K. Rockefeller
- Peter Haydu & Dona Sommers
- Martha & Colin Hayward
- Jeffrey Hughes & Nancy Stauffer
- Joseph & Ana Impellizeri
- Paul & Alice Johnson
- Chris & Joanne Johnston
- Sharen & Andrew Leonard
- Susan A. Lester
- Liberty Mutual Foundation
- Vibeke Lou
- Barbara Low
- Dorothy & Albert Marden
- Deena Matowik
- Deborah McElhinney
- Glen Mohr & Ilyse Robbins,  
*in memory of Susan Fliegel*
- Leslie Newman & Mike Caruso
- Patrick & Lynn O'Shea
- Katharine & William Reardon
- Laura Rosen
- Roberta Rubin & Don Abrams
- Dick & Dot Santos
- The Schrupka Fund
- Alan & Leslie Schwartz
- Barbara & Alan Smith
- Martha Stearns
- Andrea & Gregory Stidsen, *in  
honor of Emily Stidsen and  
Nina & Don Berk*
- Alexander Turchin
- Joan & Jerome Weinstein
- Kerry Weiss & Gustavo Pena
- Esther Williams
- David Winn
- Sara Withington
- Dr. Katharine & Marshall Wolf
- Jerry & Barbara Wood
- Jeanine Wood
- Patricia & Douglas Woodlock
- Marilyn Wright
- Harvey Young &  
Heather Schoenfeld
- Linda & Mark Zaitlin
- The Zar-Kessler Family
- Friend's Circle  
(\$100-\$249)**
- Anonymous (2)
- Lillian Sober Ain
- Sandy & Jim Annis
- William C. Barnert
- Laura K. Beasley-Topliffe
- Tracy & Courtney Beck
- Katherine Belmont
- Jennifer Berry
- Julie Beschta, *in memory of  
Susan Fliegel*
- Blackbaud Giving Fund
- Wesley & Joanne Blass
- Victor & Iona Bonneville
- Linda Brown & Shawn Wald
- Tamar Brown
- Susan M. Bruce
- Bill & Marian Bruins
- Janet Burns
- Judith Butler
- Carlock-Clifford Charitable Fund
- Charles R. Carr
- Bernadette & Bob Carsley
- Ralph Chadis
- George Chin
- Sharon Clark
- Renate Clasby
- Carolyn Clay
- Leslie Colello
- Theodore & Carolyn Colton
- Mark Connolly
- Noreen Cooke
- Chris Coveney
- Christine & David Cunningham
- Rebecca & Skip Curtiss
- Susan D'Arcangelo
- Sandra & Doug Dapprich
- Fred Daum
- Rochelle Dein
- Donald Denniston
- Janet Distasio
- Glenn Dodge
- Paul Donovan
- Roy W. Doolittle
- Boris & Lisa Dubinsky
- Joan Dubis
- Walter Einstein, *in honor of  
Stu and Jan Rose for all their  
hard work for Lyric Stage*
- Norma Elias & Saul Toby
- Deanne England
- Terry & Ann Esvelt
- Anne Exter & Lance Kawesch
- Christine Eyre
- Rob & Fedra
- Bill & Carol Fenniman
- David & Susan Foss
- Linda & John Freeman
- Mary M. French
- Alan & Deborah Friedman
- Tere Gade, *in honor of  
Michael Kaye*
- Sarah Gallivan
- Julie Ginsburg
- Mary & Steven Goldring
- Donald Goldstein
- Ms. Anita Gonzales
- Jeffery Gray
- Daniel Greenwood
- Stephen Gronberg & Carol Houde
- The Gutmans
- Alison Hall
- Philip & Mary Hamilton
- Stephen H Hill
- Donald & Nancy Hunton
- Diane Jacobs
- Lois Jacobs, *in honor of the  
Box Office*
- Mary & Robert Kahn
- Dr. Martine Kalke
- Anne Kelly
- Michael Klein
- Nancy F. Korman
- Jacqueline Kovacs & Allen Post
- Joanne & James Ryan
- Michelle Lavers
- Deborah Levey & Crispin Weinberg
- Ronald & Sandra Levy
- Reuel & Malvina Liebert
- Tina Lieu
- Matthew List
- Linda & Jack Lola
- Cynthia G. Lovell
- David & Sandra Lyons
- Jean MacFarland
- Charlie MacLeod
- Barbara P. Madden
- Mary Maker
- Susan Maren
- Fran & Jorge Martinez, *in loving  
memory of Margarita Damaris  
Martinez*
- Heather & Chris Martino
- Patricia Mazza
- Michael McCord, *in honor &  
memory of Lee Humphrey*
- Diane McCormack
- Rosa Maria McLaughlin
- Arthur McRae
- James McSweeney
- Karole Mendelsohn
- Brett & Julia Miwa
- Elizabeth Murray
- Robert Myers & Steven R. Baturin
- Greg Nash
- M. B. Nelting
- Deborah Nickla
- Joseph & Anne O'Connor
- Pamela Oliver & Mark Whittaker
- James Pacheco & Dianne Sanborn
- Bill Partridge & Elaine Sullivan
- Benjamin & Sylvia Perlman
- Bob & Paula Pickett
- Kenneth & Judith Pogran
- Donna P. Prince
- Baron E. Pugh & Rob Fagnant
- Andrey Rakalin
- Suzanne Ricco
- Susan Richards
- Mitchell & Carol Wolk Rose, *in  
honor of Stuart & Jan Rose*
- Meredith Rosenberg
- William & Jacki Santoro
- Agnes Savini
- Barbara Scafidi
- Joel Schwartz
- Nell Scovell
- Kathryn Lea Sewell
- Marci Shaw
- Jacqueline Shina
- Andrea Shirley & Joyce Richmond
- Angela Siciliano
- Linda & Peter Silverstein
- Rita & Harvey Simon
- Carole & Jack Skowronski
- Sandra Spanier & Charles Merrill
- Sarah Spillane
- Cathy Stern
- Robert Stinson
- James & Susan Stockard
- Alan & Kristi Strahler
- Ayni Strang
- Camilla & Stephen Sutter
- Isabel Tappan-deFrees, *in memory  
of Susan Fliegel*
- Alan & Susan Tick
- Maura B. Troiano
- Edmond & Patricia Trudelle
- Paul & Barbara Truscello, *in  
memory of Lucille Azanow*
- Lynn Tucker
- Kent & Nancy Van Zant
- Beverly & John Wand
- Vicki & Phillip Webber
- Harold Weintraub & Mary Thomsen
- Julie Woodall
- Sonja Yates
- Sandra Yurkovic, *in memory of  
Susan Fliegel*
- Gail Zunz
- Contributor's Circle  
(\$1-\$99)**
- Anonymous
- Deborah Abbott
- Jon Adler & Jonathan Lewis
- George Aghjayan
- Paul Aho
- James & Kimberly Alexander
- Pamela Alexander, Esq.
- William Alford
- Cynthia D. Allen
- Andrew Altman

Natasha Altshuler	Alden W. Clark	Virginia Finnerty Brooks	Corwin Hee
Deborah Amori	Sally Coburn	Elizabeth Fino	Nancy Hegarty
Ellen Angley	Anita Coco	Jim Fitzgerald	Ed Heilbron
Andrew Armstrong	Ryan Cokely	Morgan Fitzpatrick	Jon Heimberg
Bill Arnold	Shawn Conroy	Benjamin Flax	Mary Hewson
Linda Arnow	Joe Contrada	Anya Flood Taylor	Marguerite Heywood
Chris Arsenault	Ellis Cook	Monica & Bob Foley	Ingrid & Michael Hillinger
Tracy Arsenault	Bradley Cooper	Mia Foley	Carol Hillman
Danielle Babin	Carolyn Copp	Cary Forman	Carla D. Hillyard
William Backus	James Copper	Barbara & Marvin Fox	Randy Hirschtick
Eileen Bagley	Amy Cornblatt, <i>in memory of</i>	Michael Frank	Edward Hodges
Carrie Baird & Roger Waitt, <i>because we love Johnny Kuntz</i>	<i>Susan Fliegel</i>	Maureen Franzosa	Diane Holzheimer
<i>and supporting the arts</i>	Mary Jeanne Coughlan	Gavin Fraser	Marcia Hood
Dr. Nancy & Christopher Baker	A Paul Cravedi	Jennifer Fraser	Bill & Sandy Horne
Deborah Baker	Amanda J. Crone	Maria Freda	Jane A. Horton
Matt Baltz	Sarah Cuddy	Katherine French	Emily Hottal
Artie Barrett	Anne Cullen	Howard Friedman & Sherry	Ronald Hubbard
Hannah Bates	Peter Dangoia	Leibowitz	Richard Hubbard
Joan Beasley	Charley & Elaine Davidson	Frank Fuller	Justin Huff
Dalveen Belyea	Jennifer Davila	Samuel Gabay	Melissa Humphrey
Anne Benaquist	Michael Davis	Kalman J. Gacs	Jeffrey Hutton
Fred Berman	Tyler Dean	Edward Gagne	Ben Ijiri Oehlkers
Max & Glenna Bermann	Rich DeJordy	David Gagnon	Karen M. Ippolito
Thierry Bernard	Mark DeLuca	Patrick Gallagher	Lynn Jeffery
Judith Bernstein	Edmund & Judith Dente	Sheila Gallagher	Karl & Christine Johnson
Catherine Betz	Kenneth DeRosier	Michael Gannon	Genoa Jones
John O. Biderman	Marcy Devine	Paul V. Garrity	Petra Joseph
Katherine Bird	Trinity DiCarlo	Daniel Garzon	Vicki Kaplan
Phyllis Bluhm	Reed Dickinson	Robert Gaughan	Priya Katari
Richard Bock	Carl & Mary DiMaiti	Maddie Gershman	Peter and Linda Katz
Keith Bodnar	Zachary Diringier	Nancy Gertner	Yetta Katz
Amanda Boldt	Raymond Domingo	Mary Ann Gillan	Robin & Scott Katzman
Gregg Borgeson & Meg Bond	William Donahue	Elizabeth Gilmore	Pat Kauffman
Doug Bowen-Flynn	Ellen Donaldson	Alexandra Gladwell	Edward Kearns
Kathleen Boyce	Nancy & Sam Donta	Gale Glazer	Charles Keefe
Lisa Brandes	Richard Dower	Barbara Glicker Havumaki	Denis Keefe
Edwin Breslin	Catherine Downey	Kimberly Goffinet	Fred Kelly
Thomas Brien	Edward & Monica Driggers	Nancy Gold	Paul J. Keplin
Ieva Broks	Barbara Duffield	Helene Goldberg	Fiona & Michael Kerr
Amelia Broome	Ally Dugan	Marlene Goldsmith	Sachin Kewalramani
Madelyn & Alex Brown	Charles Q. Duncan	Elizabeth & Arthur Goldsmith	Jennifer Kiddie
Elisabeth Burdick	Liz Dusza	Mrs. Nancy Goodman	Theresa Kiernan
Joy Burke	Kathleen Dyer	Jinger Gottschall	Elizabeth Killorin
Iris Cabor	Lauren Elias	Jordan Gower	Andrew Kim
Jing Cai	Michael Elkin	Catherine Grant	Jim Kimball
Tijan Camara	William Elsbree	Chelsea Gray	Barbara King
Jessica Carbone	Patricia Epperly	Dr. Jon Grayzel	George Klauber
Betty Cares	David Estridge	Karen Greene	Allison Klein
Shawn Carignan	Jamal Eversley	Eric Greimann	Daniel Kleinman
Elizabeth Carsley	Michael A. Falco	Elizabeth Gross	Sue Klem
Caraline Casey	Linda Faldetta	Nancy Grossman	Rimma Kovalcik
Fritz Casselman & Susan Ashbrook	Brian Fallon	Richard Gutman	Tracy Kozelek
Colleen Cassidy	Kim Faris	Audrey Haas	Seth Koziol
Ruben Castro	Charles Favazzo	Lyn C. Hadden	Alex Komzin & Irina Kechina
Claudia Catalano	Michelle Fawson	Bill & Susan Hadge	Bernard Krafzig
Nancy Chang	Allen Feinstein	Nicholas Hadland	David Kramer
Suzanne Chapman	Katie Felton	Gerald Hamelin	Colleen Kristofor
Fran Charnas	Virginia Ferko	Donna Harris	David A. Kronman
Cristian Chelariu	Joseph Ferrara	Lee Harrison	Gaud Krotoff
Shunyuan Chen	Walter Fey & Jan Bergstrom	Connor Hathaway	Zoe Labaudiniere
	Ann Fickenwirth	Scott Hayward	Margaret Lacey

Tori Laing  
 Lisa Lam  
 Colin Lamusta  
 Kevin Lancelotta  
 Susan M. Lang  
 Joe Laskowski  
 Elizabeth Le  
 Heidi Lehner & Paul Milbury  
 Lori Leiderman  
 Kelley Leonhard  
 Elaine Levine  
 Barry & Nancy Levy  
 Xinzhuoyun Li  
 Sean Lim  
 Sunny Lin  
 Kate Linden  
 David L. Lindsay  
 Barton Lipman  
 Peter Litwack  
 Tammy Gooler Loeb & Bob Loeb,  
*in honor of Nina Berk*  
 Bryan Logue  
 Dionne Lomax  
 Nora Long  
 Janina Longtine  
 Richard Looney  
 Emilie Lyon  
 Svetlana Lyons  
 Paul Lyons  
 Dorris Woolery & Tom Mackowski  
 Thomas & Noel Maffuci  
 Thomas Mancuso  
 Richard & Candace Mandel  
 Barbara Maratos  
 Cheryl March  
 Carl Marci  
 GG Martel  
 Lee Martz  
 Theo Marvin  
 Alexa Mason  
 Michael Mathieu  
 Christopher McAllister  
 Peter McElhinney  
 Joseph McEnness  
 Edward McGehee  
 Jason McGrath  
 Julia McVay & Stanley Gross  
 Linda Medwid  
 Christopher Meninno  
 Raymond Meyer  
 Carol Mezzari  
 Gregory Miele  
 Laura Mignery  
 Stan & Sally Miller  
 Mackenzie Miller  
 Richard Mills  
 Chris Miniadis  
 Maureen Mintz & Eldad Ganin  
 Kahlil Mitchell  
 Kiersten Mitzel  
 Margaret Mone  
 Janine Mudge  
 William Mulhern  
 Mark & Nancy Murphy  
 Bob & Patricia Mytkowicz  
 David Nagle  
 Samantha Nam-Krane  
 Andy Nash  
 Alexander Nedzel &  
 Susan Kruger-Nedzel, *in honor  
 of the Lyric Stage Staff*  
 Caren Nemtzw  
 Natalie Nesler  
 Kayla Neumeyer  
 Roanne Neuwirth  
 Tyler Nguyen  
 Susan O'Connor  
 Brenna O'Donnell  
 Lise Olney  
 Nancy Olson  
 Karen Onorato  
 Ebru Oral  
 Sebastian Pacios  
 William Papp  
 Patricia Parker  
 Barbara Ann & Barrie Paster, M.D.  
 Kerry Pearson  
 Juan Perez  
 Mike Perlmutter  
 Jared Perlo  
 David Persampieri  
 Andrew Peterson  
 John Petrin  
 Robert Pettipaw  
 Chinh Pham  
 Henson Phan  
 John Picarello  
 Elizabeth Pines-Learner  
 Thomas Plocinik  
 Maura Power  
 Mark J. Powers  
 Florence Poy  
 Erin Price  
 Sue Prindle  
 Marian Prokop  
 Donna Purin  
 Anna Maria & Paul Radvany  
 Leonid Raiz  
 Suzanne L. Read  
 Michael Read  
 Michael Refolo  
 Jan Regan  
 Fran Regan  
 Michal Regunberg  
 David Reiner & Cynthia Eid  
 Bruno Restivo  
 Caroline & Terry Rice  
 Ross Rizley  
 David Roane  
 Andrea Rodericks  
 Scott Rogers  
 Roselyn Romberg  
 Larry Rosenberg  
 Leslie Rosenberg  
 Ian Rossin  
 Melissa Rubin  
 Julia Saidenberg  
 Aysha Salam & Lyn Keithline  
 Anthony Salido  
 Jacqueline Salit  
 Robert Saltzberg  
 Victoria Sandin  
 Elizabeth Sarles  
 Cameron Sawzin  
 Kate Schaeffer  
 Elizabeth Scheffel  
 Thomas Schieber  
 Anne Schroeder  
 Sarah Schwald  
 John Sciretta  
 Linda Seale  
 Lloyd Selbst  
 Carol Schneider-Sereda  
 Risa Shames  
 Frederick & Mary Shaver  
 Tani Shavit  
 Jessica Shaw  
 Claudette Shea, *in memory of  
 Susan Fliegel*  
 James Shea  
 James Sheehan  
 Leo Sheft  
 Leo Sheftelevich  
 Zoe Sherman  
 Allie Jameson Shoemaker  
 T. Lee Shostack  
 Allan Shwedel  
 Asa Pereli Silberstein  
 Susan & Joseph Silverman  
 Alexa Simeonsson  
 Helaine Simmonds  
 Janice Simmons  
 Martin Simmons  
 Jesse Simons  
 Dana Sinno  
 Elissa B. Skop  
 Stan Smith  
 Stephanie Snow  
 Elena Sokolow-Kaufman  
 Richard Sonderegger  
 Dr. Theodore Arthur Souliotis  
 Andrew Spofford  
 Michelle St. Pierre  
 William Stanton  
 Deborah Steenland  
 Jennifer Stein  
 Margaret Steinhoff  
 Bradford Steinka  
 Rebecca Stockman  
 Eugene & Madeline Straussberg  
 Joan & Richard Struzziero  
 Peter Sturges  
 Kim Sullivan  
 Dave Sullivan & Dave Nuscher  
 Liam Sullivan  
 Lucy Sutherland  
 Jill Tapper  
 Evelyn Tate  
 Regina Tate  
 Sally Taylor  
 Peter Terris  
 Christy Tetterton Ellman  
 Timothy Theriault  
 Jay Thornton  
 Linda Thorsen  
 Suzanne Tinsley  
 Bernard Tobin  
 Alisa & Ian Treadas  
 Dennis Trainor  
 Katherine Tranquada  
 Grace Trivers  
 Jordan Tsipis  
 Olga Eldek Turcotte  
 Deborah Uhlin  
 David Uhrenholdt  
 Page Valentine  
 Joshua Van Alfen  
 Fredericka Veikley  
 Alexander Vinitzsky  
 Anthony Visconti  
 Debra Walton  
 Hazel & Jordan Warnick  
 Keith Watters  
 Maryanne Weiss  
 Ellen Weiss  
 Natalie Weltz  
 Bill & Danae Wharton  
 Robie & Jane White  
 Abigail White  
 Simon Wiczner  
 Roberta Williams  
 Nancy Wimbeerg  
 Michael Wofsey  
 Martin Wohlwend  
 Fred Wright  
 Matthew Wunder  
 Jordan Wuth  
 Artimus Wuu  
 Dani Wynn  
 Yuting Yan  
 Jonah Yannis  
 Julianne Yazbek  
 Ken Yee  
 Deborah Young  
 Gregory Yukna  
 Alice Zaff  
 Wayne & Cynthia Zafft  
 Randy Zelen  
 Lory Zimbalatti, *in remembrance  
 of Susan Fliegel*  
 Karen Zoeller

**Lyric Stage Boston is a non-profit organization and the only official ticket provider for our performances.**

**Please help us keep the art on stage by purchasing your tickets directly through Lyric Stage Boston.**

**How to purchase:** [lyricstage.com](http://lyricstage.com) or call 617.585.5685

*In person at 140 Clarendon Street, 2nd floor.*

**Don't overpay or accidentally purchase a ticket from an unauthorized website.** Some common indicators that a website is an unauthorized ticket reseller are:

- Large service fees
- Rows are listed without seat numbers or only a section is listed
- The price on the ticket is different than what you paid

**We are not responsible for unauthorized ticket purchases and we do not support the reselling of tickets at a price above printed face value.** If you weren't allowed in the theater due to an unauthorized ticket purchase, report back to the seller and demand a refund. If you are unsuccessful, consider contacting your credit card company for a refund.

We encourage reporting of unauthorized ticket brokers or websites to the Mayor's Office of Consumer Affairs and Licensing at 617.635.4165 and [mocal@boston.gov](mailto:mocal@boston.gov) as well as the Commonwealth of Massachusetts Attorney General at 617.727.8400.



## ARTIST SPOTLIGHT

# What has being a part of *The Great Reveal* meant to you?



### PAIGE CLARK

“Playing Lexi has been a gift and a challenge. I find that she is the extreme of a lot of traits I value in myself: organized, strong, caring. But it’s also uncomfortable to expose some of the darker parts of my own personality: controlling, jealous, selfish. I hope everyone watching gets a chance to recognize their shadow self and find

ways to heal it.” – *Paige Clark (Lexi)*



### ARTHUR GOMEZ

“*The Great Reveal* has been a special play for me. I was able to bring Christopher to life in one of its last readings before moving to production. Being able to work with David, Bridget, and Charlotte on really fleshing him out has just been icing on the cake (no pun intended). Truly grateful for Paige, Toni, and Jupiter who provided

so much support to allow Christopher to bloom.” – *Arthur Gomez (Christopher)*



### JUPITER LÊ

“Here’s to family — biological, actuarial, and found family. And to the greatest reveal of all: love.

PS: If anyone has blankets for Linus, he will be patiently waiting after this party.” – *Jupiter Lê (Linus)*



### ANTONIA TURILLI

“I’ve found that working on a show set in such a tumultuous time has proved to be more relevant now than it may have been in 2020. In certain scenes, finding love in the relationships my character has with others has been challenging, just as it was for me in some relationships in my life. I can imagine this is not an exclusive

experience, and my hope is that audiences feel seen in the story we share with them, as these characters are truly not that different from any one of us.” – *Antonia Turilli (Dosia)*



# LYRIC FIRST PAGE

## Join us for the 2025 Lyric First Page Playwriting Festival!

Meet the future of Boston theatre  
on Monday, June 2 at 7pm.

The Lyric First Page Festival consists of readings of 10-minute plays by talented Greater Boston playwrights in grades 6 – 12. Plays will be selected, workshopped, and read by current theatre professionals. *Submissions close on April 11.*

Learn more at [LyricStage.com](https://www.lyricstage.com) under Education in our menu of options.



Lyric First Page playwrights & directors and performance (2024).



## ABOUT YOUR THEATRICAL HOME:

# 140 CLARENDON STREET



The Lyric Stage Company of Boston produces its work at 140 Clarendon Street, the historic YWCA Building, which resides on the land of the Massachusetts and Pawtucket Peoples.

The Massachusetts Peoples are the descendants of the original people that the English first encountered in what is now the Commonwealth of Massachusetts. The Pennacook tribe, sometimes called Pawtucket and Merrimack Indians, lived in northeastern Massachusetts and southern New Hampshire. The Nipmuc Peoples occupied the interior portion of what is now Massachusetts and parts of Rhode Island and Connecticut. The Mashpee Wampanoag Tribe has inhabited present day Massachusetts and Eastern Rhode Island for more than 12,000 years.

140 Clarendon Street is also the home of YW Boston, formerly known as the YWCA Boston, an organization that was at the forefront of

many social movements throughout the history of the city of Boston. YWCA Boston was first established in 1866, and began operating out of 140 Clarendon Street in 1927. YWCA helped propel many programs and initiatives for young women across the country, such as sex education, women's suffrage advocacy, bilingual instruction for immigrant women, the International Conference of Women Physicians, and the Interracial Seminar. Today, YW Boston's work focuses on addressing racial and gender inequities through a variety of diversity, equity, and inclusion services, youth programming, advocacy, and more.

In 1991, the Lyric Stage moved to 140 Clarendon Street from its former home on Charles Street. The current theater and adjacent offices were constructed on the second floor of the building, and a fourth floor rehearsal hall was added in 2016.

In 2021, YW Boston and its investment partners sold the building to Beacon Communities, who rehabilitated approximately 50,000 square feet of existing hotel and residential spaces into affordable housing units, health and wellness amenities, and offices for building management staff operated in partnership with the Pine Street Inn. The building contains 210 apartments (an increase of 92 housing units), all of which are income-restricted to households with incomes at or below 60% of the Area Median Income.

As a part of the sale, Beacon Communities and Lyric Stage negotiated a new 19-year lease, ensuring that 140 Clarendon Street will be the Lyric Stage's forever home.

For more on your visit and how to contact us, box office hours, ticketing & performance policies, and other FAQs go to [lyricstage.com](https://lyricstage.com) & click on YOUR VISIT.

The **Lyric Stage Company of Boston** produces and presents live theatre in Greater Boston with an intimate approach that promotes inclusivity and connection. The Lyric Stage leads an effort to integrate live theater and theater education into the lives of all residents of Greater Boston.

Founded in 1974 by **Ron Ritchell** and **Polly Hogan**, the Lyric Stage is Boston's oldest resident theatre company. After establishing a loyal following on Charles Street, Ron and Polly led a successful 1991 campaign to create the Lyric Stage's current home on Clarendon Street. Polly was the chief negotiator for the NEAT (New England Area Theatres) contract, which made it easier for local producers to hire members of Actors Equity Association, the union for actors and stage managers.

In 1998, **Spiro Veloudos** was appointed Producing Artistic Director. During his tenure, he continued Ron and Polly's commitment to local artists; with few exceptions, the theatrical artists that work at the Lyric Stage live in the Greater Boston area. Spiro also established a reputation for staging large musicals in the Lyric Stage's modest playing space, including a signature Sondheim Initiative, which covered ten musicals over twenty years.

In 2016, the Lyric Stage opened Clarendon Hall, a year-round rehearsal space. Clarendon Hall is available at a subsidized rate to members of the Boston Dance Alliance and other arts organizations and individuals.

Theatre-based education has been a core of the Lyric Stage's mission since its founding. In 2019, the Lyric Stage merged with City Stage Co. and its expanded education programs include Lyric City Stage, teaching artists working in classrooms in the Boston Public Schools, the Lyric First Page playwriting festival for students, and the new Lyric Back Stage.

Following Spiro's retirement in 2019, the board appointed **Matt Chapuran** as Executive Director, and shortly after, **Courtney O'Connor** was named Artistic Director. In the fall of 2023, Courtney was appointed Producing Artistic Director, continuing the work centering Lyric Stage in Boston's theatrical community, introducing live theatre to new audiences, and promoting new theatrical voices in Boston and nationwide.

## LYRIC STAGE COMPANY OF BOSTON STAFF

**Courtney O'Connor**, Producing Artistic Director

**Elizabeth Carsley**, Audience Engagement Manager

**Alex Chisholm**, Director of Philanthropy

**David D'Agostino**, Production Manager

**Marita Gattone**, Guest Experience Manager

**Heather Darrow**, Director of Marketing

**Adele Nadine Traub**, General Manager

**Chandra Pieragostini**, Associate Director of Education

**Alexandra Smith**, Community & Artistic Programs Manager

**Kandyce Whittingham**, Marketing & Digital Content Associate

**Yvonne Murphy, Eva Murray, Michele Proude**,  
Lyric City Stage Teaching Artists

### Box Office & Front of House:

**Madeline Finkleman, Mitch Kiliulis, Caleb Palmer, Lindsey Weaver**, Box Office & House Managers

**Regina Ashley, Anjali Bakhru, Jazlyn Compton, Skylar Cuminotto-Reis, Angelina DeMonte, Chloe Hein, Kim MacCormack, Carlisle Robbins, Jillian Sullivan**,  
Box Office & Front of House Assistants

**Amanda Li, Jillian Sullivan**, Community Engagement/  
Marketing Assistants

**Angelina DeMonte, Ashley McCue**,  
Administrative Associates

**Regina Ashley**, Development Assistant

**Sara Luna Ortega**, Community & Artistic Assistant

### Stage Managers 2024/25 Season:

**Charlie Berry\***, **Lisette van den Boogaard**,  
**Lucas Bryce Dixon\***, **Shawwna Dias Grillo\***,  
**Polly Feliciano\***, **Thomas M. Kauffman\***,  
**Ally MacLean**, **Hazel J. Peters\***, **Nerys Powell\***

### Set Construction:

The scenery for this production was constructed by  
**Wooden Kiwi Productions, LLC.**

### Additional Staff:

**Melissa Wagner-O'Malley**, Graphic Design

**Belinda Thresher**, Abella Publishing Services

**Leslie Holmquist**, Bookkeeping

\*Denotes member of Actors' Equity Association



Follow us!   

# WANT TO SUPPORT ARTISTS IN NEED? DONATE TO TCBF.



*Scan to Donate*

**The Boston theatre community is resilient,** but more importantly, it supports its members. Since 1997, TCBF has provided financial support to artists experiencing catastrophic hardship. Please consider making a tax-deductible donation today to help artists in need—all donations go directly back to the community you love.

**For more information (and to APPLY for funding relief), visit [tcbf.org](http://tcbf.org).**



**Theatre Community Benevolent Fund**

*Serving theatre artists since 1997 and needed now more than ever.*

# THE WBUR FESTIVAL

Thursday, May 29 - Saturday, May 31 | Boston



Busy Philipps



Roxane Gay



Michael Barbaro



Ina Garten



Alisa Amador



Eric Ripert



Kara Swisher



Sam Sanders



Jamelle Bouie



Dr. Kimberlé Crenshaw



Ira Glass



Dr. Anthony Fauci

We're celebrating WBUR's 75th birthday with a big bash for the city we love. The three-day lineup will feature captivating conversations, musical performances, multiple stages and a lively street scene. It will be serious stuff, and wicked fun, too.



[wburfestival.org](http://wburfestival.org)

BUY TICKETS